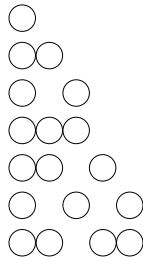


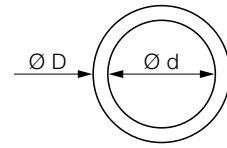
Hose Reel Inquiry

Hose Quantity

- 1 x single hose
- 1 x double hose
- 2 x single hose
- 1 x triple hose
- 1 x double and single hose
- 3 x single hose
- 2 x double hose



d = mm
D = mm



Hose Reel Type

- Automatic spring-driven un- and rewinding
- Manual unwinding and spring-driven rewinding with lock system
- Manual unwinding and motor-driven rewinding
- Motor-driven un- and rewinding

Fluid

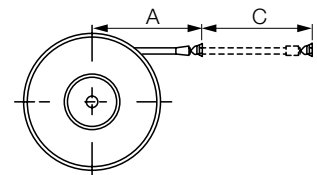
- Hydraulic oil
- Cold water
- Other
- Hot Water (max. 150 °C)
- Compressed air

Pressure: max. bar

Hose Length

- A = Usable hose length
- C = Hose length never wound

A = mm
C = mm



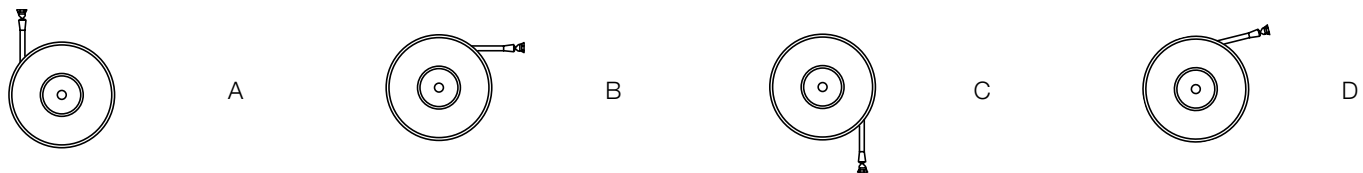
Hose Connection (please enter the thread size)

- DKOL
- DKOS
- CEL
- CES
- DKR
- AGR
- Other

Direction of Rotation



Working Direction



Company _____ E-mail _____
 Street _____ Phone _____
 Post Code, Town _____ Fax _____
 Contact person _____

All errors and omissions excepted. All rights reserved. The use or reprinting of texts and images either in part or in whole is only permitted with our written approval. All deliveries are performed in accordance with our General Terms of Sale and Delivery (GTSD). © Haberkorn GmbH – Wolfurt 2017.

Your Haberkorn contact:

Gerhard Plasser
 T +43 5574 / 695 - 2320
 gerhard.plasser@haberkorn.com

HABERKORN
 EINFACH BESSER