

# Case Study

## Oval closure lid gasket for boiler

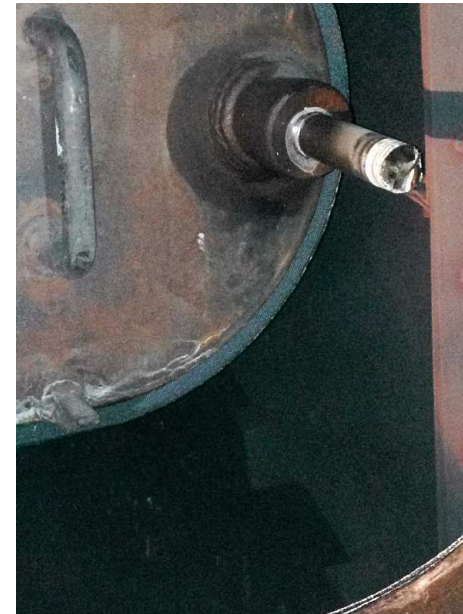
### Application

Oval closure lid gasket for steam vessel at 535°C and 136 bar working in power plant of huge German car manufacturer.

### Problem / Challenge

Random leakages after 6-9 month because of changing loads.

Dimension is not exactly elliptic and varies from one boiler door to the other.



GASKETS

TECHNICAL TEXTILES

EXPANSION JOINTS

INSULATION

NEW MATERIALS

## Oval closure lid gasket for boiler

### Solution

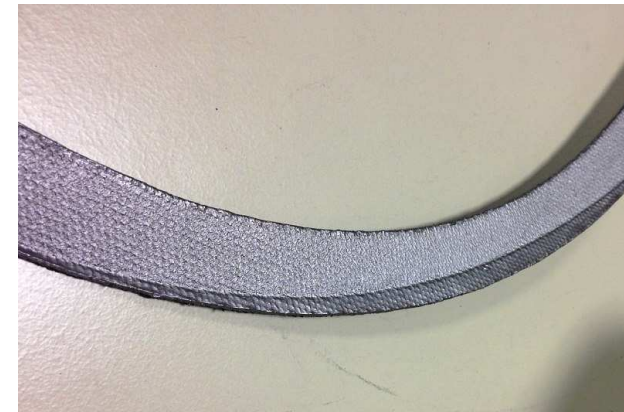
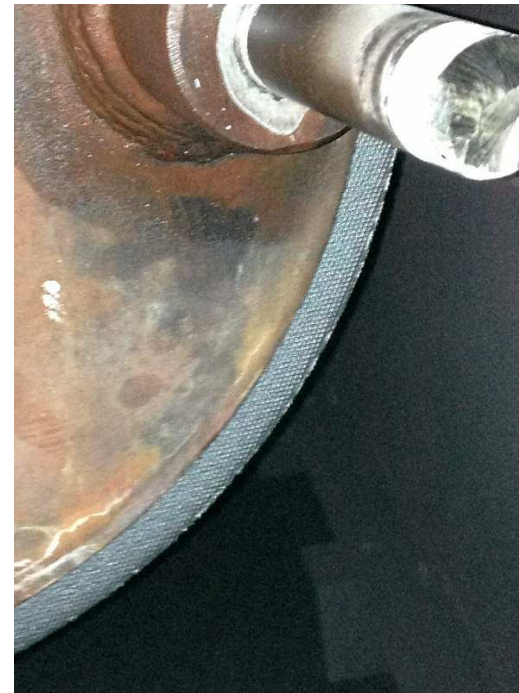
novaphit<sup>®</sup> SSTC / XP 2.0 mm offers highest performance according to changing loads due to expanded metal insert.

### Special treatment

The XP treatment provides easy disassembly of the gasket in one piece after 12 month of service

### Result

All 4 boilers of power plant are running reliable with **novaphit<sup>®</sup> SSTC / XP 2.0 mm.**



GASKETS

TECHNICAL TEXTILES

EXPANSION JOINTS

INSULATION

NEW MATERIALS